

NEW

WD380U-EST  
XD360U-EST

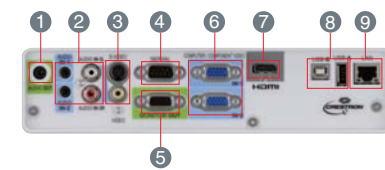


Brilliant Color™	Color Enhancer	Wall Screen	10W Speaker	User Logo Projection	Password Lock
Instant Shutdown	Long-life Lamp	Low Stand-by Power	Top/Side Loading Lamp	LAN (RJ-45)	HDMI
Closed Caption	Low Fan Noise				



Input and Output Terminals

(WD380U-EST/XD360U-EST)



- 1 Audio output
- 2 Audio input
- 3 S-Video/Video
- 4 Serial RS-232C
- 5 Monitor output
- 6 PC/Component video input
- 7 HDMI
- 8 USB
- 9 LAN (RJ-45)



MULTIMEDIA DATA/VIDEO PROJECTORS

Changes for the Better

# Impressive Ultrashort-throw Focus

## Specially crafted lens



Specifications

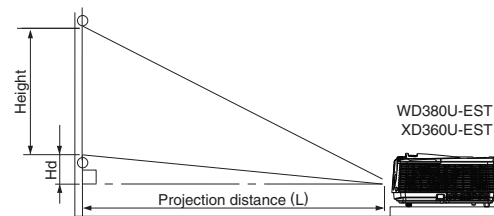
Model	WD380U-EST	XD360U-EST
Display technology	0.65" 1-Chip DMD	0.55" 1-Chip DMD
Resolution	1280 x 800 (Total 1,024,000 pixels)	1024 x 768 (Total 786,432 pixels)
Brightness	2800lm	2500lm
Contrast ratio	3000 : 1	
Picture size	70" - 180"	60" - 150"
Throw ratio	0.375	0.469
Source lamp	Normal Mode: 230W (Shut Off Time: 3000hrs), Low Mode: 190W (Shut Off Time: 6000hrs)	
PC compatibility	640 x 480 - 1280 x 800 - 1600 x 1200, 1080p Sync on Green available	640 x 480 - 1024 x 768 - 1600 x 1200, 1080p Sync on Green available
Video compatibility	NTSC / NTSC 4.43 / PAL (including PAL-M, N) / SECAM / PAL-60 Component Video; 480i/p (525i/p), 576i/p (625i/p), 720p (750p), 1080i/p (1125i/p 60Hz) 1080i/p (1125i/p 50Hz)	
Input terminals	RGB: mini D-sub 15pin x 2 Audio; Stereo mini jack (φ3.5mm) x 2 (one for PC1, another one for PC2) Video; RCA x 1 + S-VIDEO x 1 Digital: HDMI x 1 Video Audio; RCA jack (L/R) x 1	
Output terminals	RGB: mini D-sub 15pin x 1 Audio; Stereo mini jack (φ3.5mm) x 1	
Communication terminal	SERIAL: mini D-sub 9pin x 1 (RS232C) LAN (RJ-45): x 1 (Projector control, LAN Display) USB type-A; Wireless Display, PC Less Presentation USB type-B: USB Display	
Audio speaker	10W Mono	
Dimensions (W x H x D)	12.8" x 4.4" x 10.2"	
Weight	4.1 kg (9.0 lbs)	
Power requirements	AC 100 - 240V, 50/60Hz	
Optional lamp	VLT-XD560LP	

• Compliance with ISO21118-2005

**Varies depended on condition:**  
 •All brand names and product names are trademarks, registered trademarks or trade names of their respective holders.  
 •Lamp life specification is an estimate based on verification under proper conditions and is not the duration of the warranty. Lamp will shut-off automatically when usage reaches the specified estimated maximum lamp hours.  
 •Service life may vary widely depending on usage and operating environment and conditions, as well as users' adherence to the maintenance and cleaning procedures provided in the user manual.

Screen Size and Projection Distance

Side view



Screen size chart (WD380U-EST)

Diagonal size		Width (W)		Height (H)		Distance from screen (L)		Height projected image (Hd)	
inch	cm	inch	cm	inch	cm	inch	m	inch	cm
66	168	56	142	35	89	20	0.52	4.4	11
75	192	64	163	40	102	24	0.60	5.0	13
94	240	80	203	50	127	30	0.77	6.3	16
113	288	96	244	60	152	37	0.93	7.5	19
142	359	120	305	75	191	46	1.18	9.4	24
170	431	144	366	90	229	56	1.43	11.3	29

Screen size chart (XD360U-EST)

Diagonal size		Width (W)		Height (H)		Distance from screen (L)		Height projected image (Hd)	
inch	cm	inch	cm	inch	cm	inch	m	inch	cm
60	152	48	122	36	91	22	0.56	5.4	14
80	203	64	163	48	122	30	0.77	7.2	18
100	254	80	203	60	152	38	0.97	9.0	23
120	305	96	244	72	183	46	1.18	10.8	27
150	381	120	305	90	229	58	1.49	13.5	34

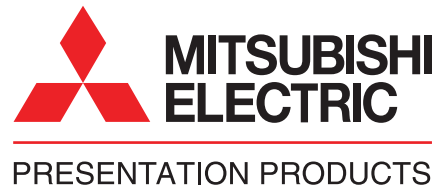
The above numbers are approximate, and may be slightly different from the actual measurements.



for a greener tomorrow

Eco Changes is the Mitsubishi Electric Group's environmental statement, and expresses the Group's stance on environmental management. Through a wide range of businesses, we are helping contribute to the realization of a sustainable society.

MITSUBISHI DIGITAL ELECTRONICS  
 AMERICA, INC.  
 Presentation Products Division  
 Phone: 888.307.0349  
 www.mitsubishi-presentations.com



NEW

WD380U-EST  
XD360U-EST



for a greener tomorrow



# Interference-free Projection... Even in the Tightest of Spaces.

Short-throw-focus projectors designed for small classrooms and meeting rooms

Conventional projectors have the problems of needing to be placed back far from the screen to project large images, thereby requiring a large room, and someone always seems to get in the projection path, interrupting the view. Mitsubishi Electric's WD380U-EST and XD360U-EST mobile projectors are equipped with a specially crafted lens that provides the best short-throw-focus performance in the industry.\* Even in classrooms and meeting rooms with limited space, large-screen visual communication free of interference is now possible.

\*Units not equipped with mirrors



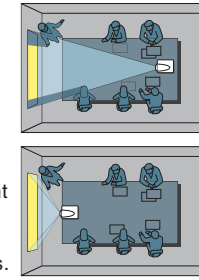
**NEW** WD380U-EST  
XD360U-EST

WIDE WXGA

## Presentation

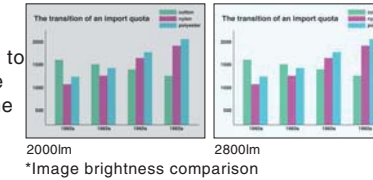
**World Shortest Focal Distance – 0.375 Throw Ratio (WD380U-EST)/80in**

\*XD360U-EST throw ratio: 0.469  
Note: Data researched by Mitsubishi Electric in March 2011. Utilizing a large-diameter lens and optimal optical engine design, the shortest focal distance (throw ratio: 0.375) in the industry has been achieved. Even if the teacher or presenter must move in front of the projected image, they are neither blinded nor disturbed by projector light, enabling them to maintain eye contact with the audience at all times.



**2800lm High Luminance (WD380U-EST)**

\*XD360U-EST: 2500lm  
The high 2800lm luminance (2500lm for XGA models) helps to ensure presentation images are clearly seen without lowering the light in the room.



**3000:1 High Contrast**

Dark chip3 is newly introduced to the DLP® chip line-up. Stray-light processing has been optimized for the optical system, achieving a high contrast of 3000:1. This makes it possible to reproduce sharp, vivid images in which sentences and other characters can be easily read.

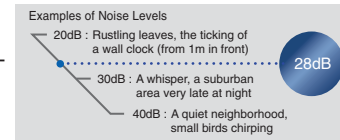
**3D READY – Enjoy the future today**



## User Friendly

**Ultra Quiet 28dB Operation**

Fan noise during projector operation can be distracting during a presentation or videoconference. The WD380U-EST and XD360U-EST projectors operate at a significantly low noise level of only 28dB (i.e., in "low lamp" mode). As a result, presentations and conferences can be held without distracting projector noise in the background.



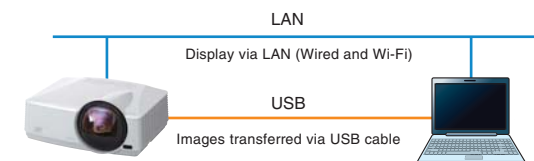
**Top-loading lamp for easier maintenance**



## Network

**USB Display/LAN Display**

To use the projector to reproduce images from a computer, a VGA cable, USB cable, LAN cable or commercially available wireless dongle can be used. For displaying images via a LAN, up to four computers can be connected to one projector. The projection screen can be divided into quarters, reproducing all computer screens simultaneously.

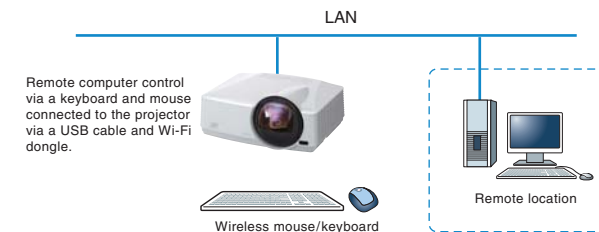


Notes:

- 1) Only one optional USB Type-A port from a computer can be directly connected to a projector. Multiple connections using a USB hub is not possible.
- 2) For displaying images via a LAN, network settings are required.
- 3) Not all USB dongles are compatible.

**Remote Desktop**

When using the LAN Display function, a USB mouse or USB keyboard can be connected to the projector enabling direct access to a computer utilizing the Internet or other application.

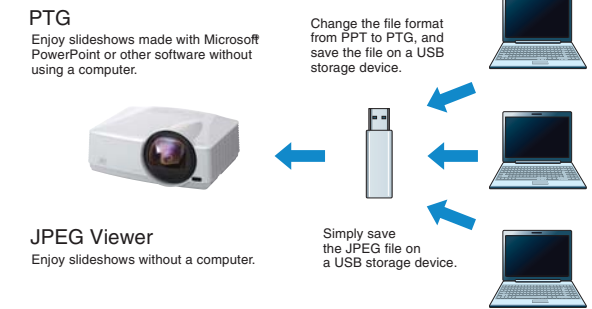


## Computer-free Presentations (PTG file/JPEG Viewer)

Using "PtG Converter", PowerPoint files can be converted into a special format and saved on a USB storage device. When the USB device is connected to the projector, users can replay slideshows or animation effects using only the projector.

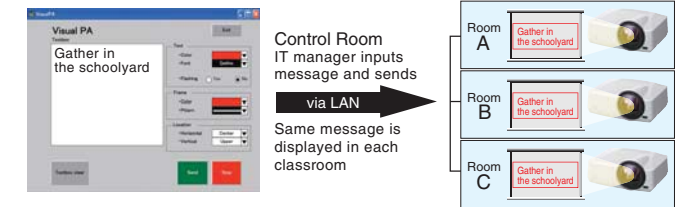
Note: The types of slideshows and animation effects that can be replayed are limited.

JPEG files saved on a USB storage device can be projected in slideshow style. Note: Only compatible with JPEG files.



## Simultaneous Message Display (Visual PA)

Using a control room computer equipped with projector-control software, administrators can simultaneously send messages (up to 350 characters long) in real-time to projectors connected to the LAN. Ideal for broadcasting important information to multiple rooms in the school or building.



## Network Connectivity

Projectors are equipped with a RJ-45 LAN terminal for remote operation. Additionally, when used with Crestron®Room View®, integrated control of up to 250 projectors including power on/off control, message display and confirmation of lamp service hours is possible using RoomView™/e-Control™. Both projectors are equipped with AMX Device Discovery for simplified device management and compatible with PLink™.

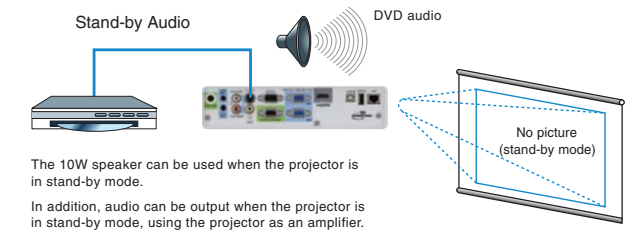
PJ Link is a registered trademark or trademark registration has been submitted in Japan, the United States and other countries/regions.



## Audio

**Stand-by Audio/Audio Pass-through**

When the projector is in stand-by mode, its 10W speaker can still be used. Additionally, while in stand-by mode, an external speaker can be used by connecting it via the Audio Out terminal.



The 10W speaker can be used when the projector is in stand-by mode.

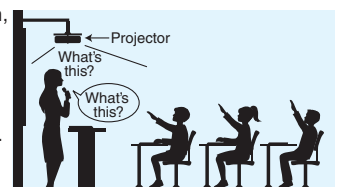
In addition, audio can be output when the projector is in stand-by mode, using the projector as an amplifier.

## Excellent Sound Projection (10W Speaker+Audio Mix)

A high-volume, 10W speaker is built-in, eliminating the need for an external speaker. Using the "Audio Mix\*" feature and wireless microphone sold separately, the presenter's voice is reproduced loud and clear in real time.

\*Only compatible with stereo mini-jack.

Not compatible with RCA jack (L/R) or HDMI. \*10W speaker and external speaker cannot be used at the same time.

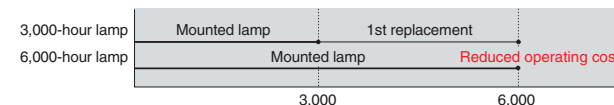


## Manufacturing Products that Minimize Environmental Impact

### Ecology

**6000-hour Long-life Lamp (max. use set to Low mode)**

A longer service life for the projection lamp has been achieved by incorporating an optimal design for lamp temperature control. Benefits include substantial reductions in projector operating cost and the labor required for changing the lamp.



\*Lamp life specification is an estimate based on verification under proper conditions and is not the duration of the warranty. Lamp will shut-off automatically when usage reaches the specified estimated maximum lamp hours. Service life may vary widely depending on usage and operating environment and conditions, as well as users' adherence to the maintenance and cleaning procedures provided in the user manual.

**Auto Power Off**

If no image signal is output for a predetermined period of time\*, power is automatically turned off, realizing energy savings by reducing needless power consumption.

\*Time preset by user

**Stand-by Wattage under 0.3W\***

Stand-by (low) mode power consumption is less than 0.3W offering increased energy savings and further contributing to environmental preservation.

\*When in stand-by (low) mode. At this time, use of the LAN function, RS-232C output and Remote 1 is not possible.