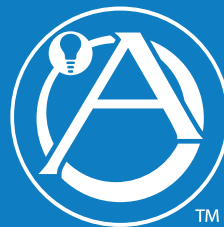


A New Classroom Security &
Sound Reinforcement System
from the Most Trusted Name
in Commercial Audio - Atlas Sound



**Atlas
Learn**

AL2430

- 💡 Works in Conjunction with Secondary Systems to Provide Enhanced Classroom Security
- 💡 Provides Excellent Infrared Wireless Sound Reinforcement
- 💡 Easily Integrates Into Any Classroom
- 💡 Keeps Teachers' Voice Healthy and Sustainable

Patent Pending

AL2430 Pendant IR Transmitter

The versatile and ergonomic AL2430 pendant / handheld microphone transmitter allows both teachers and students freedom of movement without bulky electronics or cumbersome wires. The dual mode transmitter allows teachers to control microphone volume, overall system volume and mute settings via side mounted soft touch controls. In addition, when "PANIC" and "MODE" controls are pressed simultaneously for 3 seconds a contact closure is triggered on the AL2430 receiver. This contact closure may be integrated with most any intercom or IP based notification system to signal an emergency condition in the classroom. When transmitter is configured for "student" mode operation, all controls are bypassed restricting the device's functionality for use as a wireless microphone only.

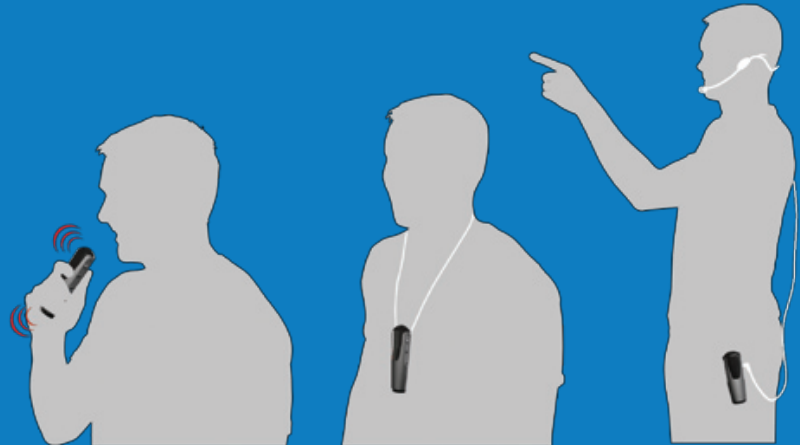
5.4"
(137mm)



Actual Size

AL-PH Infrared Pendant Handheld Transmitter

Two AL-PH transmitters are included with each AL-2430 system. For most classroom applications one transmitter is configured for teacher's voice reinforcement with the second transmitter dedicated for student's use.



Handheld

Separate LED clusters located on top and bottom of unit guarantee optimum line of sight operation when the unit is hand held

Lanyard

Secure connection features a safety breakaway function for easy release in an emergency and includes an innovative ID badge clip system

Body Pack

Allows hands free use with optional Atlas Sound AL-HSM headset mic

Panic Button – Held down for 3 seconds along with **MODE** button causes panic signal to be sent.*

Power Indicator LED
Green = On, Red = Low Battery

Auxiliary Mic Input – For use with optional Headset Mic Model AL-HSM



Mode Button – With transmitter configured for teacher use, "mode" function allows volume control selection for microphone only or the overall system level.*

ON / OFF Switch

Volume Control*



* Mode, volume and panic functions are bypassed when transmitter is configured for student use.



AL2430 Integrated Receiver / Amplifier

The compact, ergonomically designed AL2430 receiver/amplifier provides intuitive control of all system components, visual indication of system status and interface for “panic” condition feedback to secondary security systems. With inputs included to accommodate most any multimedia source, dedicated AV systems are no longer needed saving valuable space in the classroom.

1 Mute LED

Displays system mute status (controlled by teachers pendant transmitter)

2 IR Activity LED

Indicates signal transmission from wireless transmitters

3 Auxiliary Input

3.5mm Front panel “AUX” input bypasses rear panel RCA “AUX” input for convenient system interface of Ipods or other MP3 players

4 IR Dome Sensor Input

Professional grade “F” style connectors ensure secure connection

5 Microphone EQ

Allows precision adjustment to eliminate microphone feedback

6 Audio Output

30-Watt output via 4-pole, phoenix style connector (8Ω, 25V, and 70.7V)

7 Power Supply Input

System includes 120V / 240V, UL Listed / RoHS rated global power supply

8 Panic Output

Normally open / normally closed contact closure is triggered when “panic” mode is engaged on pendant transmitter. Connect to external notification systems such as Atlas Sound’s ControlKom™

9 Priority Page Input

Ensures pages and bell tones are heard when the AL2430 system is in use. A parallel line is connected from an existing paging/intercom loudspeaker to the AL2430 priority page input. Priority page source will then duck all amplified program material (microphone and/or multi media inputs) and play back over all loudspeakers connected to the AL2430. Controls are provided for gain and sensitivity adjustment

10 Line Output

Allows integration of additional external amplification, recording devices or hearing assistance systems.

11 Multimedia Inputs

Summing RCA connectors accommodate four unbalanced sources

12 Pole Mount Chassis

Atlas Sound’s patent pending pole mount design allows unit to be mounted above the classroom projector system



Projector Not Included



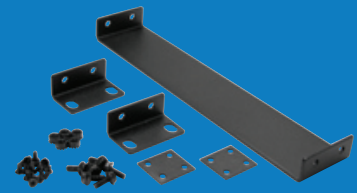
Microphone Charging Station

AL2430 charging station includes a dock section to charge two pendant transmitters and four AA rechargeable batteries simultaneously. Unit may be wall mounted via integral key hole slots or shelf mounted for easy accessibility.



Infrared Dome Sensors

Up to three infrared dome sensors may be utilized with the AL2430 receiver/amplifier. (two are included with the system) along with two 10 meter sections of UL listed RG59 coaxial cable terminated with professional "F" connectors.



Rack Mount Kit

Optional rack ears (PA702-RMK) may be used for rack mounting the receiver / amplifier.

Bring all your students to the head of the class...

The Atlas Learn AL2430 system is an in-classroom sound reinforcement solution designed for use in K-12 and higher education facilities or where a room constrained public address system is required. This complete audio enrichment package consists of amplifier / receiver, wireless microphones, and docking station designed to allow the teacher and students to walk freely around the room with the infrared microphones/system control units and project their voices through installed speakers.

Classrooms equipped with sound reinforcement benefit teachers, students, and the education system as a whole. With even sound distribution, lessons are easily heard no matter where students are seated. Attention and concentration are raised, especially in the back of the room, through this added involvement. Teachers no longer strain their voice and they can easily integrate with multimedia teaching tools such as computers and DVD players by controlling audio from a single source. And with priority paging and emergency notification to inform another location of the need for outside assistance, Atlas Learn fulfills the needs of any education facility.

Available System Configurations

AL2430-2PH-SD4

Includes: two Pendant / Handheld Transmitters, Charging Station, Receiver/Amplifier, two IR Receiver Domes with Cables, Rechargeable Batteries, Power Supplies, four Atlas Sound SD72W Loudspeakers, four 81-8 Tile Bridges, four CS95-8 Enclosures and 100' of plenum rated 18/2 speaker cable. Loudspeaker system is UL Listed for use in air handling (plenum) spaces per UL2043 standard.

AL2430-2PH

Includes: two Pendant / Handheld Transmitters, Charging Station, Receiver/Amplifier, two IR Receiver Domes with Cables, Rechargeable Batteries, and Power Supplies.

AL2430 Receiver / Amplifier Specifications				AL-PH Pendant Handheld Transmitter Specifications		AL-Dock Charging Station	
Multimedia Input Sensitivity	-10dB	Line Output Connector Type	Dual RCA	IR Led's	6 Total in 2 Groups	AL-PH Ports	2
Priority Page Input Sensitivity	14dB	Mic EQ (100Hz, 3kHz, & 10kHz) Adjustment	±10dB	Aux Input	3.5mm, 2kΩ	Charge Indicator LED's	4 (Red – Charging, Green – Charged)
Computer Input Impedance	56K	IR Input Impedance / Connector Type	75Ω F Connector	External Controls	Power, Mode, Volume, Panic Mute	PSU Type	120V Input, 9VDC, 1A Output
Multimedia Input Impedance	22K	Panic Output Contact Rating	5A@ 36V	Internal Controls	Channel A/B, Student "Lock Out"	Dimensions	7.44" (189mm) W 2.75" (70mm) D 4.17" (106mm) H
Multimedia Input Connector Type	Dual RCA	Speaker Output	30W RMS @ 8Ω, 25V or 70.7V	Indicator LED's	Mode (2 Blue), Lockout (1 Red), PWR/BATT (1 Green / Red)	IR Receiver Dome	
AUX Front Input Connector Type	3.5mm	In Line PSU Type	100V-240V In, 24VDC / 2.5A Out	Dimensions	5.187" (131.7mm) H 1.8" (45.7mm) W 1.31" (33.4mm) D	Receiver LED's	6
Line Output Impedance	1K	Dimensions	1¾" (45mm) H 8½" (216mm) W 13½" (343mm) D	Weight (with Batteries)	4.23oz (120g)	Mounting	Screw Type
Line Output Voltage	1.3V	Weight	5.75lbs (2.6kg)	Weight (less Batteries)	2.1oz (60g)	Cable	32.8' (10m) UL Listed, "F" Style Termination, RG59 Type

Specifications are subject to change without notice.

©2009 Atlas Sound L.P. All rights reserved. Atlas Sound, Atlas Learn, and Amplified Learning are trademarks. All other trademarks are the property of their respective owners. ATS003360 RevA.3



AtlasSound.com



Québec Montréal
Tél. : (418) 681-2470 Tél. : (514) 871-1994
www.presence.qc.ca